

### IMPORTANT DATES: TERM 4 - 2017

#### Maths/Physics wānanga:

Saturday 14 October (10am - 2pm)

Saturday 4 & Sunday 5 November (10am - 2pm)

Friday 17 November (10am - 3pm)

#### No kura (Labour Day):

Monday 23 October

#### Yr 10 Mentoring:

Tuesday 24 October & Tuesday 28 October

#### Senior Mentoring:

Thursday 26 October

#### Tai Maru Executive Hui:

24 October 17 at 6pm

#### Manu Tai 2018 Speeches:

24, 25, 26, 27 October (during Karakia)

#### Senior reports released:

Monday 30 October

#### Tai Maru Whānau Hui:

Thursday 2 November with shared Kai at 5pm

#### Taiohi Led PBL exhibition:

Thursday 2 November at 6 - 7.30pm

#### TW Massacre:

Friday 3 & Saturday 4 November

#### Senior study leave begins:

Monday 6 November

#### No kura for Juniors/Seniors on Exam

Leave: Monday 6 November

#### NCEA Exams begin:

Thursday 9 November

#### Senior Achievers Graduate dinner:

Tuesday 28 November at Iguanias 6:30pm

#### Junior reports released: Friday 1 December

#### Prize giving rehearsal & Full School Prize

giving: Date will either be 1 or 4 December (TBC)

#### Junior camp to Whangara:

Tuesday 5 December - Friday 8 December

#### Last day of kura for juniors:

Friday 8 December



### TOBY WESTRUPP TŪMUAKI

‘Whaia te pae tawhiti kia tata, ko te pae tawhiti whakamaia kia tina’

Pursue the distant pathways of our dreams and make them a reality.

Term four brings goals and achievement of exit strategy closer to the fore. Tai Wānanga

philosophy accentuates the importance of exit strategy above NCEA because of its relevance to career aspiration and vocational pathway. Time management and self-management become important tools for our seniors in particular. Kia kaha, kia maia.

We begin also to cast an eye towards 2018 and thinking how might we strengthen our kaupapa to enable our graduates and taiohi to be better equipped to live and contribute to an ever changing society. Three possibilities being considered are:

**Kia Tū** – Review of Junior Teaching and Learning Framework. This initial step is designed to build a foundation for all taiohi to achieve a target number of NCEA credits by the end of Y10 e.g. 40credits. By doing so it enables more time for students to work toward NCEA level 2 during Year 11 and Year 12, and more opportunity to engage with exit strategy related internships and programs.

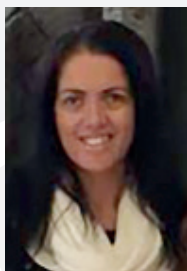
**Kia Ora** – Mental Well-being. In acknowledgement of the challenges communities and whānau face through mental unwellness this would be a potential focus. With support from health agencies we would consider practices and programs that would build resilience and help equip our taiohi with skills and tools to manage adversity and pressures.

**Kia Māori** – Te Reo me Ona Tikanga. Reviewing our delivery and programs to improve levels of engagement and proficiency.

Discussions will be ongoing, including further considerations raised by whānau at our Tai Maru hui.

‘Mā pango, mā whero, oti ai te mahi’

T.Westrupp(Tumuaki)



## MERE DAVIS

### SITE LEADER

Kia ora e te Whānau,

Term 3 has come and gone and what a big one it was! An absolute highlight, witnessing the huge success of our Junior PBL Production "Te Maui Te Tupua". Our leading kaitiaki Whaea Tiria, Matua Dan, Whaea Noema, Matua Josh, Whaea Wiki, Matua Roman and Matua Pakewa, worked very hard to lift the standard to such a high quality performance and consequently, our junior taiohi were absolutely amazing!! Thank you for the huge support that we have received and the positive feedback about our Production. After the production, our focus turned to our senior taiohi who are tracking towards completing their NCEA commitments and as well working on their taiohi-led Senior PBL (Yr 11s and 12s). Letters, have gone out to our taiohi who we believe are at risk because they are sitting under 50 credits at this time of the year. We still have External Examinations coming up in November as an opportunity to gain more credits but we are trying to round up our Internal Achievement Standards by the end of Wk 2, Term 4, so that taiohi can focus on preparing for their exams. It's hard to believe that our Yr 13s have only one more month left of their secondary school years. Please keep inquiring with your tamaiti how he/she is going with their learning, Senior Taiohi Reports will be out by mid-week 3.

At the end of Term 3, we held another Year 12 and 13 Leadership Noho at Kura, Yr 11s who are interested in 2018 Manu Tai positions were also invited. This was another success, our senior taiohi were able to reflect on their own leadership styles and think more about 'influence' and how this impacts on others. Workshops were held by Te Ahurei a Rangatahi (Thursday night) and the 2017 Manu Tai Taiohi (on Friday), we ended the school Term with Yr 12s leading full kura fun activities, with the Yr 13s supporting them.

Please ensure you keep up with what is happening this coming Term 4, it is even more busier than the last Term but once again some exciting kaupapa. Looking forward to seeing many of you at the Tai Maru Whānau hui (5pm) and the Senior PBL Exhibition (6pm) on Thursday 2 November, then the following two nights our Junior TW Massacre evenings. At this whānau hui, Tai Maru aim to be seeking your thoughts about the proposed 2018 Learning Framework. SLT are also considering a 3pm finish each day for all Juniors (Thursdays to remain 1pm) from Wk 4, whānau consultation will take place before this is confirmed.

Lastly, it has been noticed by myself and other Kaitiaki that there are a small handful of taiohi who are consistently not conditioning training in the mornings, for reasons that we do not believe are valid enough to not do any type of training. If we continue to see this pattern in Wk 1 of Term 4, I will be requesting whānau to come and explain why this is the case and how a consistent plan of training can be put into place. Conditioning training is a very important part of our kaupapa and it needs to be something that all of our taiohi participate in on a daily basis. Our bodies and minds are hugely advantaged when we start the day with conditioning training.

Mauri ora!  
Whaea Mere





## KAITIAKI LED - PROJECT BASED LEARNING

### Māui Te Tupua production

What an amazing exposition of taiohi talents! The collective efforts of the kaitiaki and taiohi resulted in a marvellous production. We would like to thank all whānau who came to tautoko our taiohi and the Māui Te Tupua production.

Here's some feedback from our taiohi about Māui Te Tupua junior PBL:

- What did you enjoy the most about this PBL?
- Seeing the final product of all of our hard work we all put in (Kayla-Maree Raihe)
- All of it! (Lesane Murray)
- Everyone bonding and having fun (Brooklyn Taipari)
- Doing something different (Tia Joyce)
- The vibe and the haka (Mauriora Ohia)
- That we started to improve every show that we did (Maiterangi Eriepa-Collett)
- Seeing the final product (Ngarewarewa Tata)
- The haka (Waimaria Borrell)
- Having fun while doing work (Regan Oldham)

What did you learn throughout the PBL?

- Hard work pays off at the end of it and that you can step out of your comfort zone and feel good about yourself (Kayla-Maree Raihe)
- Whakawhanaungatanga, Manaakitanga, Wairuatanga (Lesane Murray)
- How to play the ukelele, how to use Garageband, and FL Studio (Brooklyn Taipari)
- How to set up microphones, how to organise what I need to do better, how to step out of my comfort zone a little bit (Tia Joyce)
- Acting, confidence, stepping out of my shell (Mauriora Ohia)
- To act you have to step out of your comfort zone, you have to do what is expected the first time, and to not let the thought of what others think get in the way (don't let it get in your head) (Maiterangi Eriepa-Collett)
- How to dance, how to exaggerate my dance moves and how to act with expression (Ngarewarewa Tata)

SMILE, be more confident, use expression (Waimaria Borrell)  
Making props - cutting, using tools, structure (Regan Oldham)

We are currently editing the video footage and hope to have DVD's to sell by the beginning of Term 4. If you would like to buy a DVD, please complete the [DVD order form](#).













## TERM 4 KAITIAKI LED PBL: TW MASSACRE

### What is TW Massacre?

Have you heard of Spookers before? Well TW Massacre is our version of Spookers. Taiohi will prepare for this event by working together under the guidance of kaitiaki to plan the set and scene, sound scaping, theme, costuming and character development. This all requires taiohi to work in teams and be creative in how they prepare for this event. We also intend to bring in some experts of the industry to coach our taiohi on how to safely scare the customers. We believe we can deliver a truly frightening halloween experience.

### When is this happening?

From now until week 3 of Term 4 we will be preparing for this event. All learning activities will take place during normal PBL class time. However, the TW Massacre will take place on:

Friday 3rd and Saturday 4th November from 7 - 11pm

Friday 3rd November will be a normal 8am start at kura and taiohi will use this time to set up the various areas of kura. We will also have a dress rehearsal. Taiohi will be required to stay at kura for the duration of the day/evening and they will be supervised by kaitiaki. Kai will also be provided to our taiohi. Whānau can pick up their child at 11.30pm.

Saturday 4th November we will require taiohi to be dropped off at kura at 5pm. We will provide dinner. Taiohi will then be required to be picked up at 11.30pm.

We realise that these are extremely long hours for our taiohi and we acknowledge the time, therefore Monday 6th November will be a day off for taiohi and kaitiaki.

### Why is my child doing the Massacre?

There are two reasons for undertaking this kaupapa:

(1) We believe that it will be a fun, learning experience that follows on with some of the skill sets they acquired from the Maui Te Tupua production.

(2) We are aiming to raise \$3000 - \$4500 for the combined Tū Toa and Ruakura Junior School Camp to Whangarā, Gisborne.

### How much do tickets cost?

Tickets cost \$10 per customer. We hope to pre-sell most of the tickets in sessions prior to the event. It is advised against primary school children attending the event.

### What if I have concerns about my child's involvement in this kaupapa?

We will not force any child or whānau to be involved in this kaupapa (TW Massacre) if you have concerns about the nature of what the taiohi will be doing. We can organise other projects for your taiohi to partake in, please just let us know. However, I can assure you that on the evening of the event, all taiohi will have a lot of fun. The only people who end up being scared are our customers!

### This sounds really cool, how can I help?

We are always needing parent help. Below is a list of the areas where parent helpers are required. Please email or text Whaea

Tiria (t.waitai@taiwananga.co.nz or 0211805066) with the specific job you can help out with.

### Description of Roles/Responsibilities

#### Parent helper

We need 5 - 6 helpers to help with prop making, set and scene setup (be available on Friday from 4.00pm – 7.00pm to help set up areas) and costuming/makeup (helping your taiohi 'scarers' into their costumes and makeup)

#### Security

We need 7 - 10 security helpers who will be situated around the scenes and to keep both customers and our taiohi 'scarers' safe. The security helpers will need to be available from 6pm for briefing of area and wear all black clothing for both Friday and Saturday nights. Let us know if you can be available on one or both nights.

#### Kai stall

We need about 5 helpers to set up the kai stall area outside the conference room.

Pick up the kai (all kai will be purchased by the kura)

Cook, display and sell kai (hot chips, candy floss, lolly bags, hot drinks - coffee, hot choc and mama's donuts) from 7 - 10pm on Friday & Saturday night.

#### Pack down crew on Saturday evening

Restore the kura to normal condition after our Saturday evening  
Clean up all areas of kura including vacuuming and moping (bathrooms, hallways, Ako studio, kitchen etc)  
Empty rubbish bins

### Resources

Do you have any access to the following resources/equipment? Please let Whaea Tiria know asap if you can source any of the below for us to borrow and if you could drop it off that'll be a bonus:

Large orange cones (x15)

Red or yellow tape

White frost cloth or white material - lots of long pieces

Black PVC plastic

Long lengths of transparent plastic

Large moveable fences/barriers

Pallets (x10)

Orange plastic fencing (often seen around roadworks areas)

Road works signs/stands

Wigs (various colours)

An old rocking chair

Hospital gowns (or old nightie gowns)

Comms (walkie talkie system for communication)

Polaroid camera

Masks e.g. clown, Jason mask, anything scary

Scary costumes e.g. clown costumes, zombie costumes, doctor or nurse costumes

Old dolls or large teddy bears

White/black/red makeup or facepaint

We look forward to your support!





TAI WĀNANGA PROUDLY PRESENTS THE  
**SENIOR PBL  
BUSINESS EXPO 2017**

PLEASE SUPPORT YOUR RANGATAHI'S  
PROJECT BASED LEARNING (PBL)  
BY ATTENDING OUR  
FIRST 'TAIOHI LED'  
**SENIOR PBL  
BUSINESS  
EXPO**

**PROTOTYPE**

**DESIGN**

**BUSINESS**

**EXPO**

**2017**

**SUPPER  
PROVIDED  
BY OUR TAIOHI**

PLEASE **BRING MONEY** AS  
SOME PRODUCTS WILL BE  
AVAILABLE TO PURCHASE  
For more information contact  
[info@taiwananga.co.nz](mailto:info@taiwananga.co.nz)  
(07)853 0035

**THURSDAY 2 NOVEMBER**  
**6:00PM - 7:30PM**  
**10 BISLEY ROAD RUAKURA**



## KIA TŪ

### Study Leave

From week 4 of Term 4, senior taiohi will be released from kura for study leave beginning Monday 6th November. However, blocking tutorials will be scheduled and taiohi are encouraged to attend these blocked tutorials as a necessary part of their exam preparation. The hōtaka is now available.

During the study leave period, taiohi must sign in upon arrival at reception and sign out when they leave. They are only to stay at kura for the period that they are attending tutorials to avoid disruptions to the junior learning programmes and for health and safety reasons. All transport to and from these tutorials is the responsibility of whānau.

If taiohi are staying for the morning (10 - 12.30pm) and afternoon (1.30 - 3.30pm) sessions for blocking, then they must inform the office upon arrival so that Whaea Ngahua has accurate numbers for catering. This will only be available to taiohi who stay for both blocks, not for just one.

If a taiohi has not accumulated enough internal credits by week 4 of Term 4 and is identified as being At-Risk of not achieving NCEA, they will be required to remain at kura instead of being released for study leave. In this case, a pānui will be sent home to whānau.

### External Examinations

Where are the exams being held?

All examinations begin in Week 4 and the exam centre for our taiohi will be held at Ngā Taiātea Wharekura, 134 Rotokauri Rd, Baverstock, Hamilton 3289.

### Transport to the exam centre

Tai Wānanga will provide transport for taiohi to the examination venue but taiohi will be expected to find their own transport home. Junior taiohi sitting exams are the exception, we will provide transport to and from the venue.

### What to wear

Taiohi must wear Tai Wānanga no. 1 uniform which is the blue polo shirt, black skirt for girls and black dress pants for boys and black shoes. Taiohi may also wear the school hoody or jackets. No other clothing or headwear is permitted.

### Start times

If your taiohi has a morning exam, it is important that they arrive at kura at 8.30am or they can go directly to the venue and be there no later than 9.10 am for a 9.30am start. For afternoon exams they should arrive at kura no later than 1pm or they can go directly to the venue and be there no later than 1.40pm for a 2pm start.

Please follow the [link](#) to read more important information about External examinations for taiohi.

Ngā mihi  
Whaea Tiria



NEW ZEALAND QUALIFICATIONS AUTHORITY  
MANA TOHU MĀTAURANGA O AOTEAROA

QUALIFY FOR THE FUTURE WORLD  
KIA NOHO TAKATŪ KI TŌ ĀMUA AO!

### 2017 Examination Timetable

Day	Date/Time		Level 1	Level 2	Level 3	Scholarship
Day 1	Thurs 9 Nov	9.30am				Drama
		2.00pm	Drama	Japanese	Te Reo Rangatira	Chinese
Day 2	Fri 10 Nov	9.30am	Economics	Media Studies	Business Studies	Calculus
		2.00pm	Music	Health / Physics	Accounting	Te Reo Rangatira
Weekend						
Day 3	Mon 13 Nov	9.30am	English		French / Te Reo Māori	
		2.00pm		Business Studies	Health / Japanese	English
Day 4	Tues 14 Nov	9.30am	Chemistry	Dance / Latin	Making Music	Geography
		2.00pm	Japanese	History	English	
Day 5	Wed 15 Nov	9.30am	Science		Media Studies	Music
		2.00pm	Chinese	Geography	Chemistry	History
Day 6	Thurs 16 Nov	9.30am	Biology	Music	Biology	Art History
		2.00pm	Social Studies	Chemistry	Home Economics	Media Studies
Canterbury Anniversary Day						
Weekend						



K I A T Ū , K I A O R A , K I A M Ā O R I

Canterbury Anniversary Day						
Weekend						
Day 7	Mon 20 Nov	9.30am	Mathematics and Statistics			Biology
		2.00pm		Economics	Physics	Te Reo Māori
Day 8	Tues 21 Nov	9.30am	Accounting	Te Reo Māori	Music Studies	Economics
		2.00pm	Home Economics	English		Statistics
Day 9	Wed 22 Nov	9.30am	Agricultural and Horticultural Science	Home Economics	Classical Studies	Physics
		2.00pm	German	Biology	Geography	French
Day 10	Thurs 23 Nov	9.30am	Geography	Accounting / German	Calculus	
		2.00pm	Dance	Classical Studies	Spanish	Classical Studies
Day 11	Fri 24 Nov	9.30am	History	Education for Sustainability	History	Chemistry
		2.00pm	Business Studies	Mathematics and Statistics	Social Studies	Spanish
Weekend						
Day 12	Mon 27 Nov	9.30am	Sāmoan / Te Reo Rangatira	Drama	Statistics	
		2.00pm	French	Chinese	Earth and Space Science	Accounting
Day 13	Tues 28 Nov	9.30am	Physics	Art History	Drama	Agricultural and Horticultural Science
		2.00pm	Latin	Spanish	Art History	
Day 14	Wed 29 Nov	9.30am	Health	Agricultural and Horticultural Science	Agricultural and Horticultural Science	Latin
		2.00pm	Art History	French	Economics	
Day 15	Thurs 30 Nov	9.30am	Te Reo Māori	Earth and Space Science	Sāmoan	Earth and Space Science
		2.00pm	Classical Studies	Social Studies	Chinese	Sāmoan
Day 16	Fri 1 Dec	9.30am	Media Studies	Sāmoan / Te Reo Rangatira	Dance / Latin	German
		2.00pm	Spanish		German	Japanese

L1 MCAT: 19 and 21 September

## 2017 Submission Dates for Portfolios and Reports

Date	Level 1	Level 2	Level 3	Scholarship
Wed 18 Oct	Visual Arts			
Wed 25 Oct		Visual Arts		
Wed 1 Nov	Design and Visual Communication / Technology	Design and Visual Communication / Technology	Design and Visual Communication / Education for Sustainability / Technology	Dance / Design and Visual Communication / Physical Education / Technology
Thurs 2 Nov			Visual Arts	Visual Arts

**Note:** These are the dates for schools to submit materials to NZQA. Students should confirm dates for submission within their schools.



## KIA TŪ

### L1 L2 L3 English

Being the end of Term 3 almost all of our taiohi are exceedingly busy working on overdue internal assessments. To invoke a few cliches, most taiohi have some runs on the board, but are head down and nono up to ensure they get over the line. If you have any queries regarding L1, L2 & L3 English, please contact Matua Chris Hill at [c.hill@taiwananga.co.nz](mailto:c.hill@taiwananga.co.nz)

### MATHS/ PHYSICS STUDY WĀNANGA

Level 2 and 3 Physics taiohi have finished with all their internals and are now working towards their external examinations. For Level 2's the examination will be on 20th of November, that is, week 6 of Term 4 and for Level 3's on 28th of November, that is, week 7 of Term 4. The taiohi who are sitting external examinations really need to show their commitment to their studies.

To support taiohi learning in Maths and Physics, we are hosting the second Maths/Physics wānanga on Saturday 14th October from 10am - 2pm with Tāmoko Ormsby. Tāmoko is a qualified Engineer who has a passion for helping taiohi. Snacks will be provided.

Remaining dates for Maths/Physics wānanga:

Saturday 14th October (10am - 2pm)

Saturday 4th and Sunday 5th November (10am - 2pm)

Friday 17th November (10am - 3pm)

Nau mai haere mai taiohi mā!

Here are some pictures of the first study wānanga which proved to be very valuable for taiohi.





## KIA MĀORI - Work Inspiration Leadership Programme

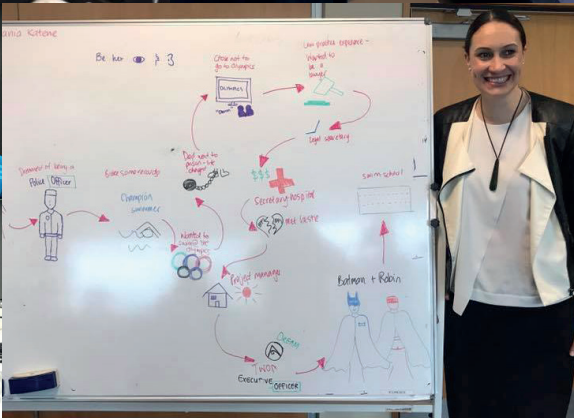
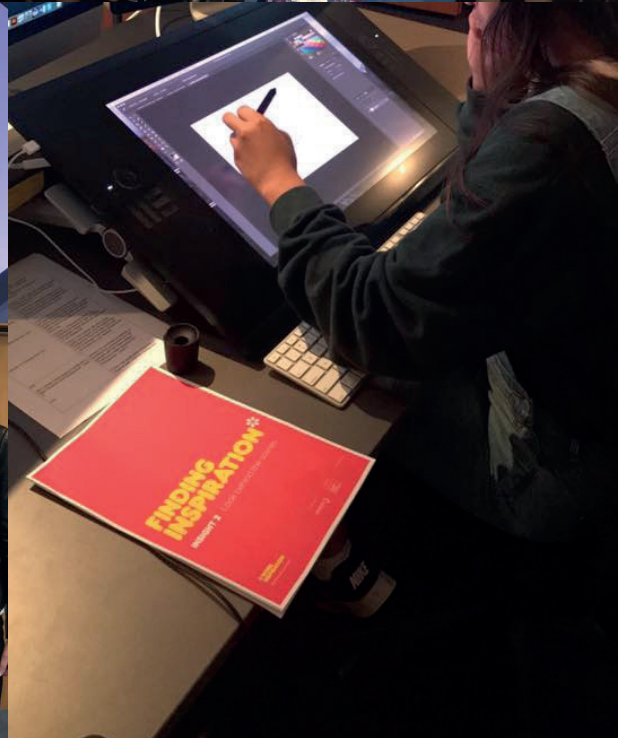
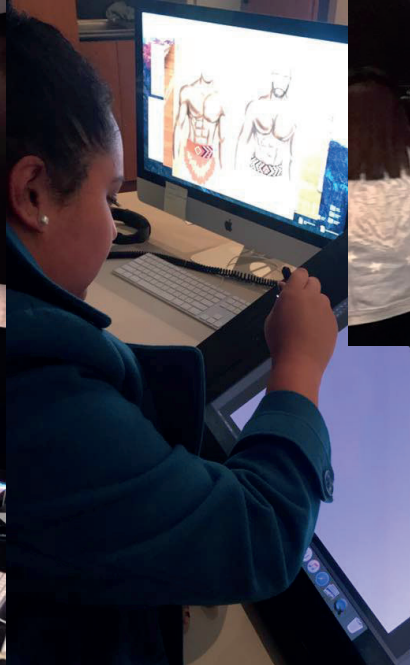
A group of students and I got the chance to attend a work inspiration program funded by Te Wānanga O Aotearoa (TWOA). The program lasted 3 days, starting on Monday and finishing on Wednesday. On the first day of the program, we started off with whakawhanaungatanga activities which involved introducing ourselves and getting the chance to know a little more about our mentors. We learnt different styles of leadership as well as learning a different way to remember information. On the second day, we went to TWOA's headquarters in Te Awamutu. We had some people talk to us about their job and the hardships they

faced before coming to work at TWOA. A highlight of mine was our visit Te Ipurau, their creative site. We learnt many aspects of design and it was a fun hands-on experience. On the last day we worked on our aspiration boards, a valuable activity to help us understand where we wanted to go in the future. Overall, it was a really fun experience and I would highly recommend it to others in the future.

Nā Stella McLean (Year 11 taiohi)









K I A T Ū , K I A O R A , K I A M Ā O R I

## KIA ORA

### RUGBY LEAGUE NATIONAL SECONDARY SCHOOLS TOURNAMENT WEEK:

This year we were able to attend the National Secondary Schools Rugby League Tournament week, by being allocated a Wild Card which we accepted. It was quite a different experience than last year in that we had a lot of younger players (6 Year 11s, 1 Year 10), we also had a couple of Yr 12s and 13s who had not played much league at all. Whilst the results of our campaign this year were not as successful as last year (we had 1 out of 5 wins), the wairua of our campaign was certainly something that we were proud about. We witnessed our team who had never previously played together, literally go out to battle against much bigger sides who had a lot more 'together time' as teams and the boys got better and better as the week progressed. We had our absolute best game on Weds against Macelin College who went on to win the Development Grade, thumping their



opposition by 40 points in the Final, yet when we played them, we kept them scoreless for numerous parts of the match and the final score was only an 8 point difference. Combining with our TWTT for the event was definitely a highlight as it gave the boys opportunities to build life long friendships and experiences, there were 9 TWTT Boys and 11 Ruakura boys, these boys started the campaign as strangers and left as brothers, we were very proud of them all!



### UNISS

Maa pango, maa whero e oti ai te mahi. With our collective efforts we will succeed.

Winter tournament week in Auckland (UNISS) with the tuakana netball team was a true testament to the strength, skills and determination of the netball ladies at Tai Wananga. Having won 7 out of 10 games and maintaining our position in the B grade forms a platform for future growth and development in netball at Tai Wananga. Each game was like playing a final and the TW ladies showcased their skills and positive attitude in each and every game. This is a true testament to the Tai wananga guiding principles of Kia tu, kia ora, kia maaori and whanau support of the ladies, we thank you and appreciate whanau for your support of our Taiohi. Team members Kiriana Te Namu, Mihiterina Williams, Kalani Mahu Butler, Beizhe Cooper, Pourewa Ruri-Clarke, Whetumarama Nuku, Maia Huata, Keeti Rawiri, Matariki Wara, Kayla-Maree Raihe, Hiria Thomas and Peata Waitai. The success of the team is also attributed to effort and support of coach Suzanne Mahu and manager Ohomairangi Tupaea, Ngaa mihi nui your efforts are appreciated. The success and collective support of the team resulted in three members of the team being named in the B grade tournament team Kiriana Te

Namu, Maia Huata and Pourewa Ruri-Clarke also named the best attacking player of the B Grade. Ngaa mihi nui ki a koutou katoa and we look forward to the netball season ahead maa pango, maa whero e oti ai te mahi. Naa Whaea Wiki (Kaitiaki in charge - netball)

### L1 AND L2 PE

Taiohi in PE Level 1 and 2 participated in a 10km run at the end of July. Nearly all the taiohi passed the Achievement Standard attached to the run and the two taiohi that didn't have a re-sit run on October 21st. Any taiohi at Tai Wananga who wish to run this race can enter and gain credits for the run, even if they are not in Physical Education as a subject. Taiohi must enter through the 4 Seasons River Running event online, cost is \$10 only. All those taiohi who ran to the best of their ability achieved fantastic results and now understand they can do a lot more than they previously thought, as the majority had never run this far before. Setting the goal and putting their mind to it was all that was needed to gain the credits, feel great about themselves and do something new. Kia Kaha Level 1 and 2 PE taiohi. I look forward to entering more great results after October 21st 2017 race with NZQA.





K I A T Ū , K I A O R A , K I A M Ā O R I

## KIA ORA SPORTING ACHIEVEMENTS

### RUGBY LEAGUE:

Tai Wānanga students Bailey-Taukiri McLean & Tuma Te Koi featured in the Rotorua Daily Post representing Wai-Coa-Bay U15s at the National Youth Rugby League Championships.

Turangawaewae Te Koi represented Waicoa Bay U17s, this team placed 3rd at U15s and U17s National Championships for Rugby League.



### RUGBY LEAGUE:

In August our Head Boy, Sheldon Rogers was selected for the New Zealand Rugby League U18s Residence side that played the Australian Taurahere U18s side (Australian based NZ players), in late September. His NZ Residence side defeated Taurahere quite convincingly, which was an upset win over the much more experienced Australian based side, from this game Sheldon was selected for the New Zealand U18s Select side that played the Australian school boys at Puketawhero Park in Rotorua on Tuesday 26 September (last week of Term 3). The NZ U18s select side went down 26 18 to a very skilled, fast and powerful Australian School boys side. Sheldon led his team in performing the Haka, for both the NZ Residence and NZ Select sides.



### WAKA AMA:

Congratulations to our girls involved in Waka Ama Long Distance Nationals over the weekend. We had good results from all involved.

Keeti Rawiri - 2nd J16 girls division - w1 & 3rd J16 girls w6  
Peata Te Kurapa-Waitai - 3rd J16 girls w6  
Hunter Punga - 3rd J16 girls w6  
Shania Berryman - 3rd J19 girls (Cook islands)

### NETBALL:

Congratulations to the following taiohi for being Selected to attend the Magic Level 1 Performance Squad 2017.

Maia Huata  
Pourewa Ruri-Clarke  
Kiriana Te Namu





## JUNIOR CAMP

### COMBINED TŪ TOA AND RUAKURA JUNIOR SCHOOL CAMP TO WHANGARĀ, GISBORNE

We are planning a junior school camp to Whangarā, Gisborne which will take place in Week 8, departing on Tuesday 5th December and returning on Friday 8th December.

#### Rationale

For junior taiohi to engage in experiences in a rural setting conducive with our kaupapa of 'Kia Tū, Kia Ora, Kia Māori' and collaborate with juniors from our other site, Tū Toa.

#### Location

Whangara, Turanganui-ā-Kiwa (Gisborne)

#### Dates

Week 8 - Tuesday 5th December (10 am depart Kirikiriroa) - Friday 8th December (3pm return to Kirikiriroa)

#### No. of taiohi

49 taiohi

#### Budget

##### Estimated expenses

Transport

Vans option: \$4200 (incl. insurance) (5x vans hire)

Petrol: \$1250 (5x \$250)

Sub-Total: \$5450 (estimated)

Accommodation: \$2000

Food: \$1500 (Nutrition budget to cover breakfast & lunch)

Activities: \$1200 (60 x \$20)

Miscellaneous: \$1000

**TOTAL: \$10,250**

##### Estimated income

Student contr.: \$7350 (49 x \$150)

Fundraising: \$3000

**TOTAL: \$10,350**

#### Fundraising options

Massacre - Junior PBL

Estimated income ticket sales

**Total: \$2500 - \$3500**

Kai stall

Estimated income

**Total: \$500 - \$1000**

**TOTAL ESTIMATED FUNDRAISING INCOME: \$3000 - \$4500**

#### Cost per taiohi

\$150 (Works out to be \$15 per week over 10 weeks)

#### Proposed Activities

Whakawhanaungatanga with Tū Toa juniors (skits & games)

Tikanga marae

Water & beach safety - swimming

Stingray feeding at Tatapouri

Rere falls rockslide

Hiking & Orienteering

Mau rakau & Kapa Haka

Camping (Anaura Bay or Whangara)

Sand castle competition

Survival in the bush

Sports competitions (volleyball, touch rugby, ki-o-rahi, capture the flag)

Fishing & gathering kaimoana

Tolaga Bay - wharf (mussels)

#### Important message

It has been explained to all junior taiohi that it is a privilege to attend the junior camp and should their behaviour be deemed unacceptable by SLT throughout the duration of Term 4 leading up to the camp then they may forfeit the opportunity to attend the camp. They can only have a maximum of 4 behavioural incidences, after the 5th incident, then taiohi will be required to stay behind in Hamilton.



## ADMIN

#### CURRENT DETAILS

Do we have your correct details? Please update your email, phone numbers, postal and physical addresses. By completing this google form Link [Change of Contact Information](#) or contact [n.raumati@taiwananga.co.nz](mailto:n.raumati@taiwananga.co.nz) or [info@taiwananga.co.nz](mailto:info@taiwananga.co.nz) to update your personal information.

#### ABSENT OR LATENESS

Please ensure if your son/daughter is going

to be absent, that you make contact the Office or your Rōpū Kaitiaki,  
Phone: 078530035, Text: 0226579322,  
Email: [attendance@taiwananga.co.nz](mailto:attendance@taiwananga.co.nz)

#### SIGN IN/SIGN OUT

If your son/daughter is arriving late/leaving early, Your Rōpū Kaitiaki needs to be informed by email/text or phone. Once confirmed, they are required to sign in and sign out at reception.

#### OTHER IMPORTANT EMAILS

[info@taiwananga.co.nz](mailto:info@taiwananga.co.nz)

General information

[accounts@taiwananga.co.nz](mailto:accounts@taiwananga.co.nz)

Account information

[admin@taiwananga.co.nz](mailto:admin@taiwananga.co.nz)

Ruakura office

[enrolment@taiwananga.co.nz](mailto:enrolment@taiwananga.co.nz)

Enrolment queries